

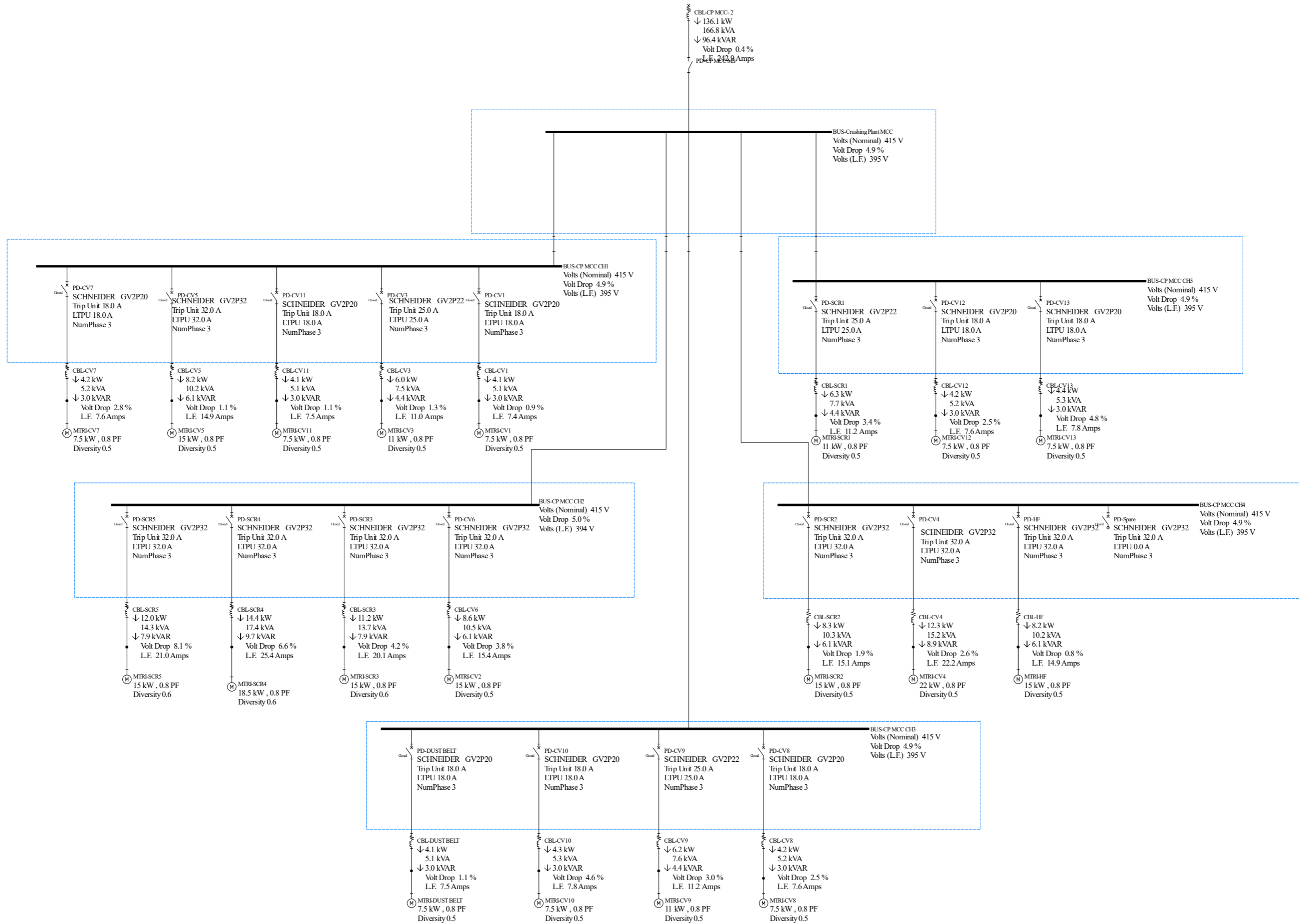
ANALYSED BY:	N.W
CHECKED BY:	S.B
PRINTED:	May 6, 2020



**WHITE TECHNICS PTY. LTD.**  
 ELECTRICAL & INSTRUMENTATION CONSULTING ENGINEERS  
 ABN: 48 065 204 597  
 4/36, New Street, Ringwood, VIC 3134  
 p: (03)98470222 e: info@whitetechnics.com.au w: www.whitetechnics.com.au

TITLE:	LOAD FLOW ANALYSIS Project Number 9296
--------	---

CLIENT:		
DRG NAME	REF	REV
MSB & DIST	1	A



ANALYSED BY:	N.W
CHECKED BY:	S.B
PRINTED:	May 6, 2020



**WHITE TECHNICS PTY. LTD.**  
 ELECTRICAL & INSTRUMENTATION CONSULTING ENGINEERS  
 ABN: 48 065 204 597  
 4/36, New Street, Ringwood, VIC 3134  
 p: (03)98470222 e: info@whitetechnics.com.au w: www.whitetechnics.com.au

TITLE:	LOAD FLOW ANALYSIS
	Project Number 9296

CLIENT:		
DRG NAME	REF	REV
CRUSHING PLANT MCC	2	A